

Student Guide to Rapid Testing

Home Testing (From Monday 22nd March 2021 onwards)

Home testing will take the place of on-site testing from the week beginning **Monday 22nd March**. **Each student who consents to testing will be provided with two tests per week**. One box contains 3 weeks' worth and one test should be done every 3-5 days.

You need to log on to the NHS test website to record your results.

It is important that any positive tests that occur as a result of home testing must be communicated with the school as soon as possible and the child must not attend school following a positive test until instructed to do so. They also need to be taken for a **full test** to a local testing centre.

You can watch the following video to support you with completing your home test by clicking on the following link:

<https://www.youtube.com/playlist?list=PLvaBZskxS7tzQYIVg7lwH5uxAD9UrSzGJ>

Testing is important because you could be carrying the virus and may spread it to others. Testing all staff and pupils of secondary age and above (11+) without symptoms will support the education sector to continue to operate.

Simple and quick tests using antigen Lateral Flow Devices (LFD) enable the rapid testing of staff and secondary age pupils and students, from their home, without the need for a laboratory. Education settings will be provided with these test kits to distribute to their staff and students so that they can conduct testing at home.

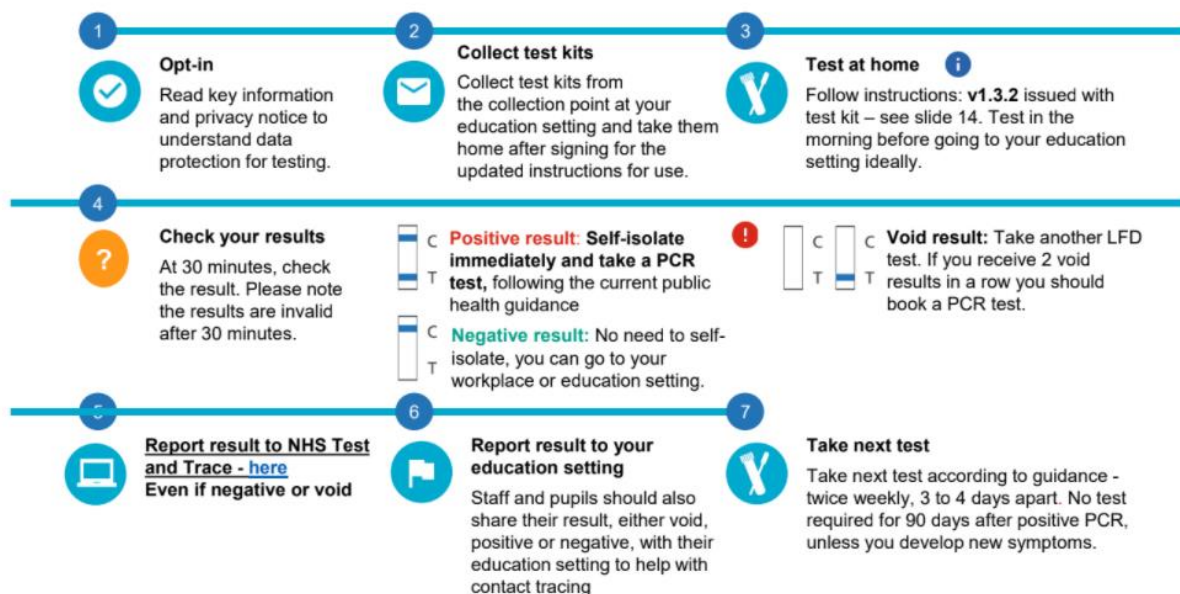
Testing will help to break chains of transmission

You will need to:

- carry out twice weekly testing at home (3 to 4 days apart) before coming into the education setting in the morning
- maintain 'hand-face-space'

IMPORTANT: Tests are only for the use of the person assigned the kits, they should not be taken by anyone else.

Testing at home – the process



- i It is recommended that you **test yourself in the morning** before attending your education setting (so there is less chance you get infected between taking the test and attending the setting). However, you may choose to do the testing the evening before, especially the first time, to give you more time to get accustomed to the test, and to have more time for your education setting to react to a positive test result.
- ! If you receive a positive LFD result you should [book a confirmatory PCR test](#). We would advise visiting a community or drive through test site as this is the quickest way to get tested, or you can order a home test kit. It is important that you self-isolate until the result of your PCR test.

Frequently Asked Questions – Home Testing

Overview

NHS
Test and Trace

Key questions

- ? **Why are we testing people without symptoms of COVID-19?**
Up to one in three people who have coronavirus (COVID-19) do not display any symptoms.
- ? **Is this compulsory?**
Testing is voluntary, and you should not be prevented from going into the education setting if you do not take part. The success of this public health measure depends on as many people participating as possible.
- ? **Can children and young people swab themselves?**
No children below the age of 11 should be tested. Secondary pupils aged 11 should have the test administered by an adult, and pupils and students aged 12-17 should be supervised by an adult but can swab themselves.
- ? **How often do staff and students need to test?**
Staff and students will test at home on a regular basis (twice per week, 3 to 4 days apart) usually before they come into the education setting.
- ? **How effective are these tests?**
LFD tests have been widely and successfully used to detect asymptomatic COVID-19 cases. The speed and convenience of the tests supports the detection of the virus in asymptomatic individuals, who would not otherwise have got tested. LFD tests are approved by the Medicines and Healthcare products Regulatory Agency (MHRA). The tests are highly specific, with low chances of false positives. They are also very sensitive and able to identify the majority of the most infectious yet asymptomatic individuals. It is important to remember that these tests are an additional layer of health protection measure in addition to hand washing, face covering and social distancing.
- ? **Where do I get my test kits?**
You can collect your test kits from the education setting that you work at or attend. Test kits were delivered to primary schools and school-based nurseries in January. Test kits will be delivered to other settings from 24 February, and to PVI nurseries from mid-March.
- ? **Are all staff included in the testing programme, or only teaching staff?**
Enough test kits are being supplied for all staff on-site, including nursery and support staff, such as those responsible for running breakfast and after-school clubs.

You may also want to take part in the activities on testing to help your understanding of the process by clicking on the link below:

<https://www.storicise.com/>

You are reminded that selling on these tests is illegal and all tests have registration numbers recorded at school.